

breaky places

/ Colours Café	tue-sun: 8am
/ Haepinest	wed-sun: 9am
/ Ruetz Bakery	mon-sun: 6.30am
/ Moustache brunch	sun: 10am
/ Marktbar	all day every day: 8am
/ Café Momo	tue-sat: 9am
/ Café Namsa	tue-sun: 9am
/ Verenas	mo-fr: 8am



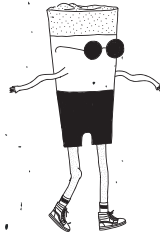
lunch/dinner

/ Montagu Bed & Beers	sandwiches, salads
/ Due Sicilie	pizza/pasta
/ Mis Kebap	melemen pide, to-go
/ Marktbar	local'n seasonal
/ Machete Burrito Kartell	burritos, tacos
/ Elfriede	cross cultural
/ Little West Indies	jamaican food
/ Moustache Café-Bar	fancy bar food
/ Vitrine	vegan food, to-go
/ Burenwirt	traditional
/ Glasmalerei	traditional
/ Olive	veggie/vegan
/ Alia's	falafel, to-go
/ Green Flamingo	vegan

In all of these places you will find a variety of vegetarian food.

café/bar

/ Montagu Bed & Beers	/ Treibhaus
/ Moustache Café-Bar	/ Irish Pubs
/ Toscana	/ Wohnzimmer
/ Machete Burrito Kartell	/ Sixtytwenty
/ Copa Cabana	/ Kater Noster
/ Strudel Café	/ Babalon
/ Café Momo	/ Bierfabrik
/ Café Central	/ Café Weli
/ Brooks odb	
/ Tribaun	



clubs and going out

/ Montagu Bed & Beers	Djs, live concerts
/ Dachsbau	hip hop, trap
/ Jimmy's	hip hop, trap
/ Treibhaus	live concerts
/ PMK	live concerts
/ Project	electronic
/ Tante Emma	electronic
/ Arche* Ahoi	electronic
/ Aztec	electronic
/ Club Cubique	electronic

BOGENMEILE

check out their programm online.

Montagu Bed & Beers

Höttingergasse 7+9 | 6020 Innsbruck

montagu-hostel.com
hey@montagubedxbeers.com

+43 (0)664 105 15 95

European emergency number: 112

Instagram: montagu_bedxbeers

Facebook: Montagu Bed & Beers

Whatever you need, we are always happy to help. Make yourself at home and enjoy your stay.

Common Area: A la: mi casa es su casa. Treat all things as if they were yours. Please leave things as clean as you found them – or even cleaner. ☺

Tab Water: We have delicious fresh mountain water from the tap to refill your bottles to avoid plastic.

Trash: In front of the common area on the rooftop floor you will find: Plastic, cans and metal, paper, organic waste and general waste. We are happy about every piece of trash that ends up in the intended bin. Thank you.

Booking: Via our homepage is the cheapest option. Taking your time here pays off. The longer you stay – the cheaper it gets.

Check in: from 2 pm to 7 pm till 10 am

Early arrival /after check out: Luggage storage at the basement at 10pm

Silence time: at 10pm

Wifi Password: lovesallaround



Dear beautiful people, Welcome to *Montagu Bed & Beers*. In this colourful place we care about each other with love and respect. We do not tolerate any kind of discrimination. We invite you to be a part of our philosophy and create a caring and peaceful atmosphere amongst each other.

The Bar. With a lot of support from friends and family six friends opened the local DIY bar on the ground floor in 2016, where you can enjoy a variety of regional & seasonal delicious treats today. Here you'll find Montagu-made drinks and lemonades and vegetarian food like sandwiches, salads and potato wedges. In the basement we've created a platform to host a diverse range of international artists like musicians, poets, workshops, screenings, and cultural happenings.

The Hostel. In 2018 we re-created the upper part of the house in collaboration with different collectives of architecture students and other creative minds. We transformed it into a place where people from all over the world are meeting, getting to know different perspectives: sharing jokes and making new friends and will be filled with life. Thanks to you, beautiful.

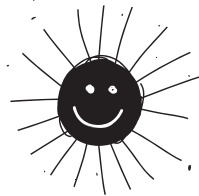
hiking 'n' biking

/ Arzler Alm	bike trail opt.
/ Rauschbrunnen	
/ Götzner Alm	
/ Mutterer Alm	bike trail opt.
/ Patscher Alm	
/ Sistranser Alm	
/ Hungerburg	bike trail opt.
/ Zirbenwanderweg	
/ Katzenkopf	bike trail opt.

sport equipment rental: Die Börse

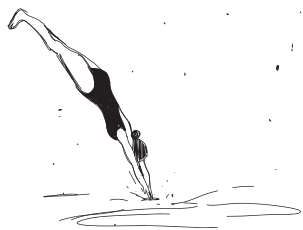
skiing

/ Nordkette	
/ Patscherkofel	
/ Mutterer Alm	sledding opt.
/ Glungezer	sledding opt.
/ Axamer Lizum	
/ Seefeld	
/ Katzenkopf	sledding opt.
/ Schlick	sledding opt.
/ Stubai Gletscher	highest
/ Kühtai	

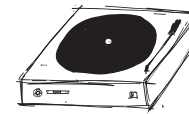


other activities

/ Tivoli	public pool
/ Baggersee	quarry pond
/ Lanser See	natural lake
/ Sillschlucht	river
/ Natterer See	natural lake
/ Ehnbachklamm	flume



/ Skating	Landhausplatz Skatehalle [indoor] Tivoli USI
/ Climbing	Kletterzentrum {indoor}
/ Ping-Pong	Inn promenade
/ Basketball	Inn promenade
/ Slackline	Inn promenade USI
/ Sauna & Swimming	Dampfbad IBK Hallenbad Höttinger Au StuBay Telfer Bad



support the locals

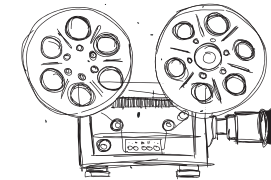
/ Die Diele	Vintage, 2nd Hand
/ Walde	Soap store
/ Nabu Records	Vinyl store
/ Farmer's Market	only sat 7-12am
/ Kiosk 26	Vintage, 2nd Hand
/ House of Tea & Coffee	teashop
/ Hanfstube Zur Blüte	cbd shop
/ Monte Gwand	Vintage, 2nd Hand

strolling around

/ Waltherpark	park
/ Marktplatz	markthalle
/ Landhausplatz	architecture
/ Hofgarten	park
/ Botanischer Garten	garden
/ Inn promenade	river
/ Domplatz	park
/ Wiltener Platzl	café/shops
/ Sillschlucht	river
/ Rapoldipark	park

culture

/ Treibhaus	live concerts
/ Bäckerei	cultural center
/ Landestheater	theater
/ Haus der Musik	music
/ Landesmuseum	history museum, contemporary exhibitons
/ Taxis Palais	contemporary exhibitons
/ Audioversum	interactive exhibitons
/ Tirol Panorama	history museum
/ Leokino	cinematograph



sights

/ Goldenes Dachl	golden roof
/ Stadtturm	town tower
/ Schloss Ambras	castle
/ Bergisel	ski-jumping architecture
/ Kristall Welten	swarovski
/ Sightseer	hop on - hop off bus
/ Kufstein	city
/ Hall in Tirol	city